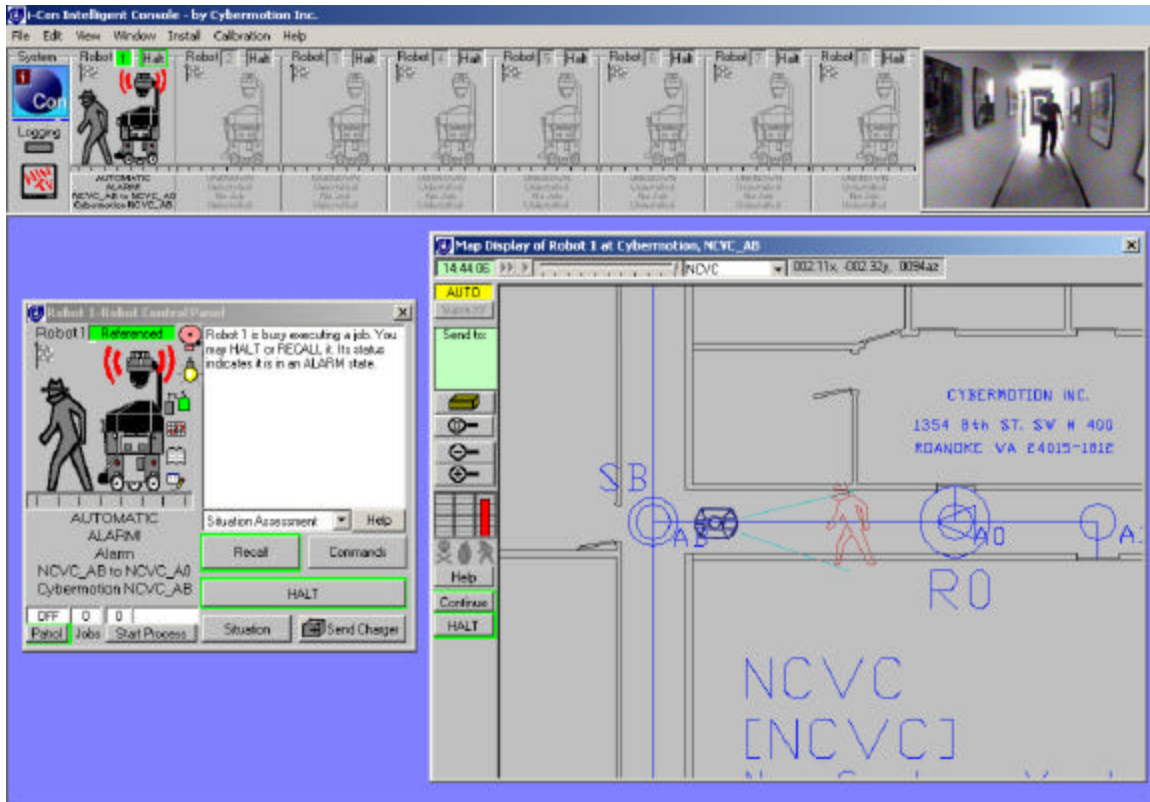


i-Con 2.0



Intelligent Console System

An interface so powerful that one mouse can control 8 robots, and hundreds of fixed alarms, automatic doors, and elevators!



The CyberGuard® security robot alone is a powerful and versatile sensor system, but as part of a fully integrated security system its power is further magnified. The i-Con operator interface automates routine patrol and alarm response processes while providing the operator with a full, live, graphical situation assessment at all times. i-Con is the result of years of field experience in corporate, military, and industrial security and thousands of suggestions from our field engineers and customers. So what could be more powerful than i-Con? The answer is i-Con 2.0!

And yet it's so simple even the boss could use it! We humans are visual creatures. The quickest way to present information to us is through graphical images. Furthermore, we quickly learn things that fit a consistent pattern. Using these two principles, i-Con provides an intuitive, friendly, and efficient interface.

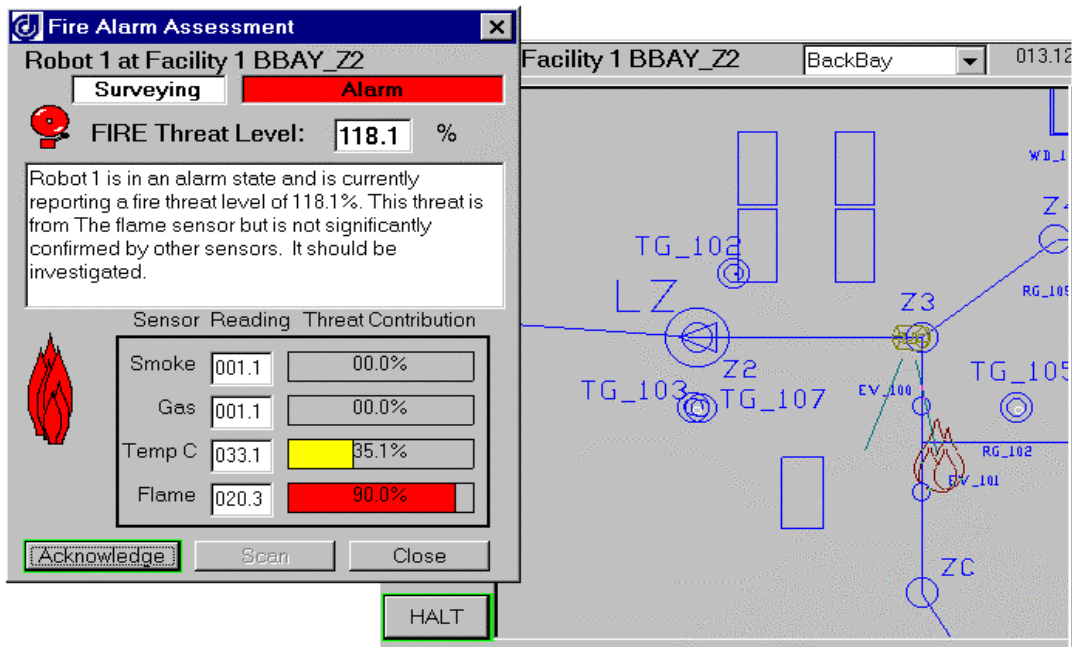
Now i-Con plays well with others! Yes, i-Con 2.0 is now integrated with full LAN support, and it connects automatically to Microsoft's Outlook for emailing reports, Access and RFID tagging systems for tracking assets and valuable inventory, and Excel for creating graphical reports of many types! You can even set i-Con to automatically send different kinds of reports to different people on a daily basis. These reports can be about operations, assets, or the environment.



**1354 8th Street, SW, Suite 400
Roanoke, VA 24015**

(800) 762-6848, www.cybermotion.com

Copyright 2000 by Cybermotion, Inc. All rights reserved.



Every copy of I-Con includes a built in operations expert! An alarm is a startling event, and it is no time for getting out the operator's manual! With i-Con, *the operator is never alone*; an expert system is always offering an assessment of the situation, and the options available. Unlike cumbersome online "help" systems, I-Con automatically provides live, detailed, and continuously updated advice that covers the current situation and only the current situation! i-Con tells you what is happening, what it means, what your options are, and even what to do about the situation!

And it has an online installation and maintenance expert too! i-Con is not only simple to use, it is simple to install, simple to program, and simple to troubleshoot. Behind the operator interface i-Con 2.0 has an even wider array of displays designed for use by technicians and programmers. Fully animated door, elevator, and alarm displays are programmed in seconds using PathCAD "Drop-in Integration and Automation". Everything about these interfaces is embedded in the map of the building and automatically imported into i-Con! Now i-Con 2.0 provides graphical controls for sensor calibration and for fuzzy logic threat assessment. In seconds the user can change threat assessment criteria to match the expected environment. For a demonstration, or more information, contact Cybermotion today.

Data communications between i-Con and remote sites can be via RS-232, telephone modem, or LAN (TCP). Each of these options has complete installation, operation, and diagnostic support, and they may be used in any combination.

Capabilities:

Controls and Monitors	Responds to	Automatically Integrates with
1 to 8 CyberGuard robots	Graphical User Commands	PathCAD3 Definition files
Elevators and doors	Fixed Alarm and button inputs	PathCAD3 Listing files
Camera Pan, Tilt, Zoom	Random or Sequential Patrol	AutoCAD** DXF files
VCRs and Transmitters	Patrol Scripts	DataLog Reporting Software
Audio & Speech Systems	Time/Date Events	EventLog Reporting Software
All navigation systems	Low battery conditions	Existing Dispatcher CYB files
Fire, Air, and Intrusion	User defined commands	Speech or sound alarm files

System requirements:

CPU (for 8 robots or facilities)	Pentium 500MHz or faster
RAM	96 megabytes recommended
Operating system	Windows 95*, 98*, NT*, or 2000*
Communications Hardware	8 Channel Serial / Modem Card and/or Network Adapter



1354 8th Street, SW, Suite 400
Roanoke, VA 24015

(800) 762-6848, www.cybermotion.com

Copyright 2000 by Cybermotion, Inc. All rights reserved.

Hard drive

4 gigabyte recommended

*Windows is a trademark of Microsoft Inc. **AutoCAD is a trademark of Autodesk Inc.



1354 8th Street, SW, Suite 400
Roanoke, VA 24015
(800) 762-6848, www.cybermotion.com

Copyright 2000 by Cybermotion, Inc. All rights reserved.